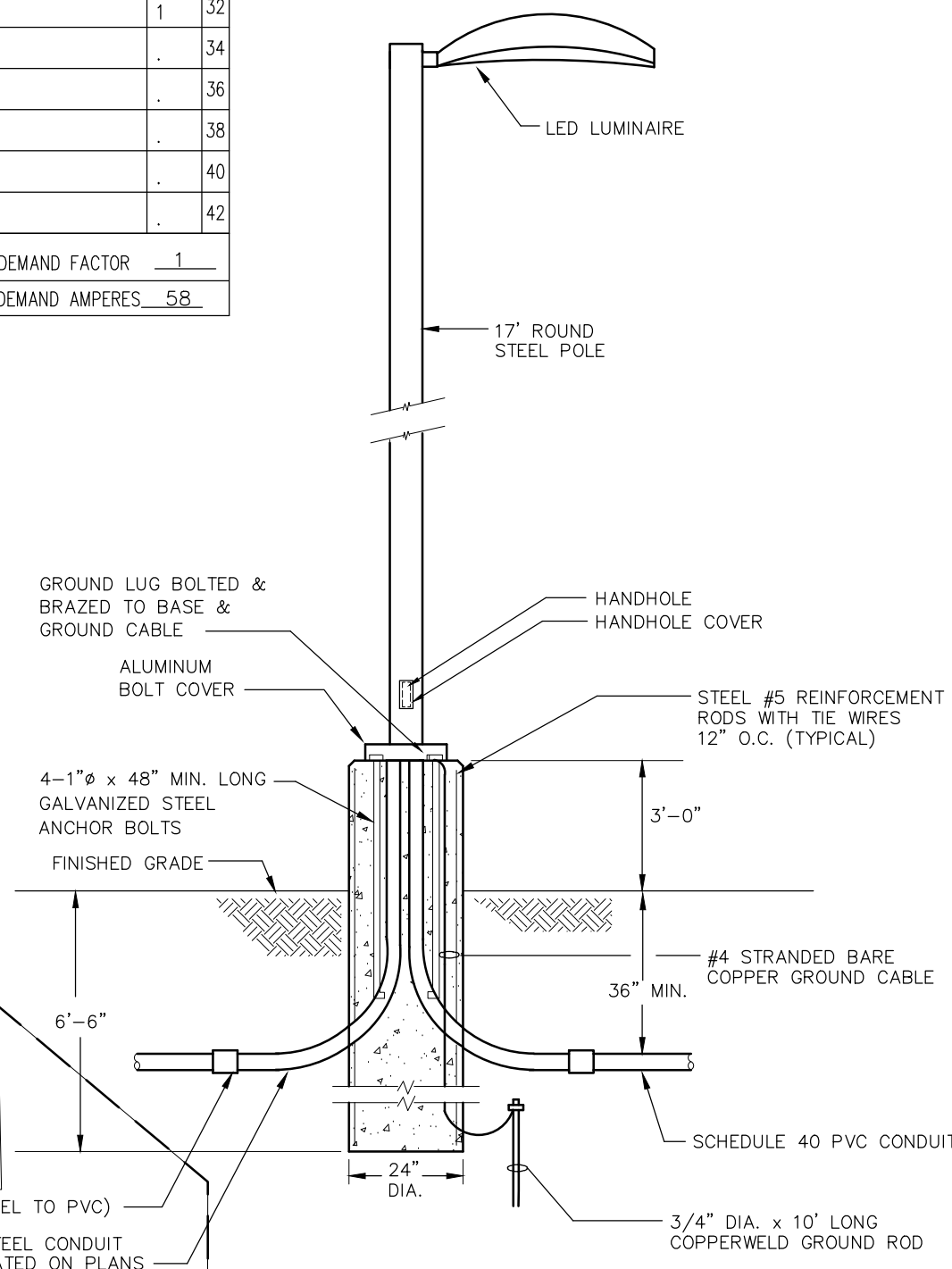
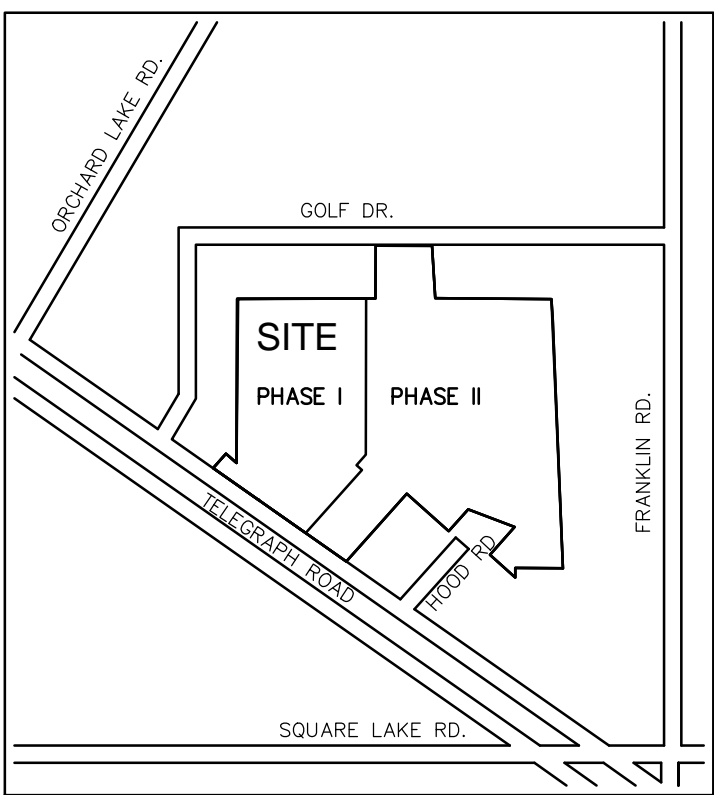


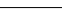



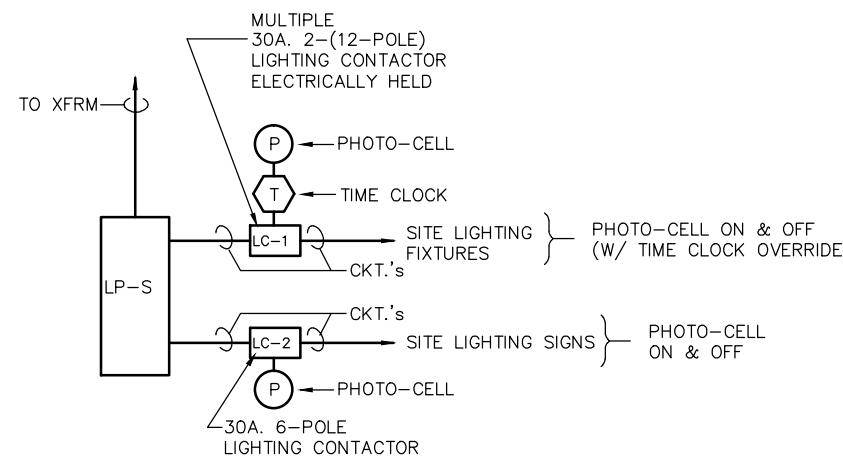
1. ALL ELECTRICAL WORK AND EQUIPMENT SHALL COMPLY WITH LATEST EDITION OF N.E.C., LOCAL & STATE CODES, ORDINANCES & REGULATIONS, AND CITY OF CHICAGO STANDARDS.
2. THE ELECTRICAL CONTRACTOR SHALL VISIT THE JOB SITE AND TELEPHONE MISS DGI (800-482-7171) FOR THE EXACT LOCATION OF UNDERGROUND UTILITIES. THE CONTRACTOR SHALL COORDINATE WITH REPRESENTATIVES OF OTHER UTILITIES LOCATED IN THE VICINITY OF THE WORK.
IT SHALL BE CONTRACTOR'S RESPONSIBILITY TO OBTAIN ANY DRAWINGS OR INFORMATION NECESSARY REGARDING THE PRESENCE OF UNDERGROUND UTILITIES WHICH MIGHT AFFECT HIS WORK.
3. PRIOR TO ANY WORK ALL LOCATIONS AND ELEVATIONS OF UNDERGROUND UTILITIES SHALL BE PROVIDED TO THE ELECTRICAL CONTRACTOR FOR PROPER COORDINATION.
4. THE ELECTRICAL CONTRACTOR SHALL COORDINATE LOCATIONS OF HIS EQUIPMENT AND WIRING WITH OTHER TRADES TO PREVENT INTERFERENCE BETWEEN HIS WORK AND THE WORK OF THE OTHER TRADES.
5. LOCATE ANY JUNCTION BOXES REQUIRED NEAR LIGHT POLES WHEN POSSIBLE.
6. REFER TO SITE DRAWINGS TO COORDINATE EXACT LOCATION OF ALL SITE LIGHT POLES PRIOR OF DOING ANY WORK.
7. ALL SITE LIGHTING SHALL BE DESIGNED FOR 3% VOLTAGE DROP PER NEC. MINIMUM SIZE CONDUIT TO BE 1 1/4".
8. PANEL AND MISC. CONTROL EQUIPMENT SHALL BE IN A NEMA 3R OUTDOOR ENCLOSURE LOCKABLE KEY TO THE CONTROL PAD.
9. RUN 1/2" 470C FROM PANEL TO MENARDS MAIN ELECTRICAL ROOM FOR FUTURE REMOTE CONTROL OF MENARDS SITE LIGHTING AND SIGN BY MENARDS. COORDINATE LOCATION WITH MENARDS CONTRACTOR IN THE FIELD.
10. RUN 1/2" 470C FROM EACH LIGHT POLE TO MENARDS ELECTRICAL CONTRACTOR TO COORDINATE ROUTING ITS UP TO THE ELECTRICAL CONTRACTOR TO FIELD COORDINATE.

PANELBOARD TYPE: PANELBOARD DESIGNATION 480/277V VOLTS 3 PH. 225A MAIN BUS 22K AIC			LIGHTING X LOCATION SITE		RECEPTACLE _____ SITE		MOUNTING: FLUSH _____ SURFACE		_____ X	
QTY	KVA	LOAD	A B C			QTY	KVA	QTY	KVA	
1	2.9	MENARDS SITE LTG	20A	15.6	*	20A	SITE LTG	2.7	7	
3	2.9	*	20A	5.6	*	20A	*	2.7	4	
5	2.2	MENARDS SITE LTG	20A		4.4	20A	2 SIGNS	2	6	
7	2.2	*	20A	4.5	*	20A	SITE LTG	2.3	8	
9	1.4	MENARDS SITE LTG	20A		3.7	20A	*	2.3	10	
11	1.4	*	20A		3.4	20A	2 SIGNS	2	12	
13	2	MENARDS SIGN	20A	3.7	*	20A	SITE LTG	1.7	14	
15	1	MAIN PRIMARY SWITCH NO.1 HEATER	20A		1.7	20A	*	1.7	16	
17	1	*	20A		1.9	20A	SITE LTG	1.9	18	
19	1	PRIMARY SWGR NO.2 HEATER	20A	2.9	*	20A	*	1.9	20	
21	*	*	20A	2	*	20A	LOOP SWITCH NO.4	1	22	
23	1	LOOP SWITCH NO.3	20A		2	20A	*	1	24	
25	1	*	20A	2	*	20A	LOOP SWITCH NO.6	1	26	
27	1	LOOP SWITCH NO.5	20A		2	20A	*	1	28	
29	1	*	20A		2	20A	LOOP SWITCH NO.7	1	30	
31		SPARE	20A	1	*	20A	*	1	32	
33			20A			20A	SPARE		34	
35			20A			20A			36	
37			20A			20A			38	
39			20A			20A			40	
41			20A			20A			42	
KVA SUB TOTALS			19.7	15	13.7	DEMAND FACTOR			1	
CONTD LOAD KVA			48.4	DEMAND LOAD KVA			48.4	DEMAND AMPERES		58



LIGHT POLE MOUNTING DETAIL
NOT TO SCALE

LIGHT FIXTURE SCHEDULE	
A	 LED LIGHT POLE, DUAL HEAD, MVL01 ON A 17' ROUND POLE UTH03X1 LED 60C 1000 40K T5W 480 SPA DOBXD RSS 17 4B DM19AS DOBXD (POLE)
B	LED LIGHT POLE, SINGLE HEAD, MVL01 ON A 17' ROUND POLE UTH03X1 LED 60C 1000 40K T5W 480 SPA DOBXD RSS 17 4B DM19AS DOBXD (POLE)
C	 LED LIGHT POLE, SINGLE HEAD, MVL01 ON A 17' ROUND POLE UTH03X1 LED 60C 1000 40K T5W 480 SPA DOBXD RSS 17 4B DM19AS DOBXD (POLE)
D	 LED LIGHT POLE, SINGLE HEAD, MVL01 ON A 17' ROUND POLE UTH03X1 LED 60C 1000 40K T5W 480 SPA DOBXD RSS 17 4B DM19AS DOBXD (POLE)
E	 LED LIGHT POLE, SINGLE HEAD, MVL01 ON A 17' ROUND POLE UTH03X1 LED 60C 1000 40K T5W 480 SPA DOBXD RSS 17 4B DM19AS DOBXD (POLE)



SITE LIGHTING DIAGRAM —
CONTROL DIAGRAM
N.T.S.



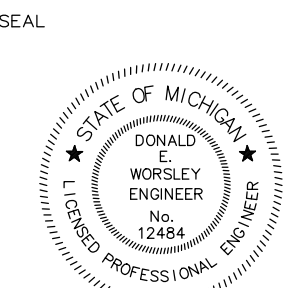
**PROJECT
DESIGN
ASSOCIATES, INC.**

ENGINEERS, CONSTRUCTION MANAGERS, CONSULTANTS
PO BOX, BIRMINGHAM, MICHIGAN 48012
Tel. 248.646-2643

JOB TITLE:
XXXX
BLOOMFIELD
VILLAGE

SHEET TITLE:

ELECTRICAL
SITE LIGHTING
PLAN



All drawings and written material appearing herein constitute original and unpublished work of Project Design Associates Inc. and may not be duplicated, used or disclosed without the written consent of Project Design Associates Inc.

Do not scale drawings. Refer to architectural drawings for exact dimensions. Use given dimensions only. Installer shall check and verify all dimensions and conditions at job site.

[illegible]

DRAWN:

DESIGN

LK

CHECKED

LK

LK

DATE:

4.3.17

PROJECT

XXX

ACADFIL
YYY

SHEET N

└─

上